



## PCDC Expands GO! HOME Grants

PCDC is expanding its GO! HOME downpayment assistance grants to include all Phelps County residents (not just new residents), and its increasing the grant size for buyers of new homes.

Since its introduction in 2017, nearly 300 new residents have moved to Phelps County using downpayment assistance from PCDC's GO! HOME program. PCDC created the program to encourage commuters to move to Phelps County. More than \$17 million of home sales have been generated by the program.

Today, housing conditions are different than eight years ago. Inflation, rising construction costs and interest rates have taken a toll on prospective home buyers so PCDC has updated the GO! HOME program to provide more assistance in a flexible package.

GO! HOME 2.0 increases PCDC's match to \$2 for every \$1 from employers. Buyers can earn \$5,000 from PCDC and \$2,500 from the employer for a \$7,500 downpayment grant to buy a newly constructed home.

Buyers of existing homes can earn a \$1 for \$1 grant or up to \$2,500 from PCDC and \$2,500 from participating employers.



Scan QR Code for GO! HOME details



## INDUSTRY SPOTLIGHT

# Pivot Business Major Influence in Phelps County Economy

The center-pivot industry has a major impact on the local economy. Some even consider Phelps County to be the center pivot capital of the nation.

Four pivot dealers are headquartered in Holdrege, and those businesses collectively employ more than 125 people in sales, service and support roles.

Central Valley Irrigation, Holdrege Irrigation, Husker Irrigation and Wagner's Irrigation help Phelps County's progressive farmers more efficiently water their crops to help feed the world.

According to the NRCS office in Holdrege, Phelps County farmers irrigate 257,601 acres of land. While some acres are still irrigated using gravity and pipes on the ground, most of those acres are watered through the large steel sprinklers that circle their crops called center pivots.

"You are probably not going to find anywhere else in the world that's this densely populated with pivots," said Jeremiah Johnson, owner of Central Valley Irrigation.

Johnson said pivot sales are good in Phelps County partly because of the innovative farmers in the area.

"There are very progressive farmers around Holdrege, and they want to be more efficient and do a better job with less labor," Johnson said.

Central Valley started in Holdrege in 1980 and sells Valley pivots. It has locations in Kearney and Lexington, but the majority of its 50 employees are based in Holdrege. The business serves farmers in a 60-mile radius of Holdrege and sometimes beyond.

continued on page 3



### 4 MAJOR BRANDS

- Central Valley Irrigation (Valley)
- Holdrege Irrigation (Reinke)
- Husker Irrigation (Zimmatic)
- Wagner's Irrigation (T-L)

### IRRIGATION STATS PHELPS COUNTY 2024

- 348,000 total acres of land
- 277,090 acres of cropland
- 257,601 acres irrigated
- (SOURCE NRCS)

### PIVOT STATS PHELPS COUNTY 2014

- 1,644 pivots in Phelps County
- 56% of Phelps County land was under pivots
- (NRCS MOST RECENT STATS)

FOLLOW US / LIKE US

PhelpsCountyNE.com facebook.com/PhelpsCountyDevelopmentCorporation





**Executive Director**

Ron Tillery  
Ron@PhelpsCountyNe.com

**Director of Business Services**

Sally Sadd  
Sally@PhelpsCountyNe.com

**Director of Administrative Services**

Stacy Pafford  
Stacy@PhelpsCountyNe.com

**GO! NEWS Editor**

Kristine Jacobson  
Send news releases,  
news tips and story ideas to  
kjacobson@krjpr.com

**PCDC Officers**

Shane Westcott - President  
Jared Engelbert -  
Vice President  
Chris McQuillan  
Secretary/Treasurer

**Board of Directors**

Janet Boehler  
Nate DeWald  
Grant Ericksen  
Allison Fritsche  
Grant Hinze  
Phil Hinrichs  
Reed McClymont  
Jeff Moon  
Doug Stevenson

**PCDC Offices**

502 East Avenue, Suite 201  
PO Box 522  
Holdrege, NE 68949-0522  
ph (308) 995-4148  
fax (308) 995-4158  
www.PhelpsCountyNe.com

# Liffrig Journeys From Curious Citizen to Holdrege Mayor

About four years ago, Holdrege resident Jim Liffrig started attending City Council meetings.

“What else are you going to do on a Tuesday night?” he said.

As the months went on, he became more interested in city government. He then learned that former Mayor Doug Young was not going to seek re-election in 2022.

“I decided to put my name in the hat,” Liffrig said. “Little did I know, I was the only one who put my name in the hat.”

He was elected as mayor of Holdrege in the fall of 2022. Since then, he has continued to learn more about city government every day and enjoys shining a positive light on the city he has embraced as his hometown.

Some of his mayoral duties include presiding over twice monthly City Council meetings, learning more about city government at conferences, reading proclamations, attending ribbon cuttings and community events, and judging the Swedish Days parade.

He enjoys spreading good news about the town he has lived in since 1977 when he moved here to work as a radio engineer at KRVN. He settled in Holdrege as his early career years were spent mainly at the radio towers just north of Holdrege. He moved here from the Minneapolis area.

“I always thought I would go back to the city,” Liffrig said. “But I really enjoy the smaller community.”

He retired from his job of 47 years in April and now has more time to devote to walking outside, golf, reading, and being mayor.

Liffrig spends a few hours a day, four days a week at City Hall to stay abreast of city happenings and keep communications open between him and the city employees. Liffrig said one of his favorite parts of the job is working with the city staff.

“They are all professional and really know what they are doing,” Liffrig said. “I’ve really enjoyed getting to know them.”

During his first year and a half as mayor, Liffrig said he is proud of the partnership between the city and PCDC in bringing the new Northern Meadows subdivision to town.

The city has also been working on behind-the-scenes projects such as preparing to update the electrical grid and wastewater treatment plant. Although not “flashy,” Liffrig said those projects are needed to keep the city’s infrastructure working properly.



**Holdrege Mayor Jim Liffrig**

Some more exciting upcoming projects include planning for possible renovations and updates to the City Auditorium, a potential library project, and a new outdoor aquatic center.

Liffrig said the city will apply for a planning grant this fall to study updates to the auditorium including adding air conditioning, a catering kitchen, and updating restrooms. The auditorium is an important community asset for meetings, special events and gatherings. It has historical relevance to the city as many famous musicians performed there.

He is staying in touch with library board members about their ideas for a potential new or expanded library. And, city council members are just beginning to study a possible aquatic park to replace the Holdrege City Swimming Pool, which was built in the 1940s and is starting to have mechanical and maintenance issues.

Liffrig said the two biggest questions he receives when out in the community are what’s going on with the former Shopko building and when is the new baseball field going to be complete?

He said filling the former Shopko building is not a city project, so he can’t answer that. But he said he looks forward to games being played at the new baseball complex in 2025.

Liffrig said one of Holdrege’s best strengths is the people who live here and their enthusiasm and support behind projects. He cited the recent Iron Horse Arts District and the number of volunteers and support it has received.

He looks forward to continuing to serve as mayor for the next several years.



# Construction Begins on Northern Meadows Subdivision

Construction began this spring on the new Northern Meadows subdivision in Holdrege, and five new homes will soon be built on the property.

PCDC Executive Director Ron Tillery said the subdivision will eventually feature a neighborhood of 30 new homes.

Crews began with dirt work on the property in March, and paving began in late April on new streets in the subdivision, which is located near the new Holdrege baseball complex between 14th and 18th Avenues.

Community Capital Partners, LLC, is the developer overseeing the project. R. Perry Construction Inc. of Sioux City, Iowa, is the builder.

Dave Hegarty, CFO of R. Perry Construction, said the goal is to start building three to five houses this summer with completion dates



**This house is similar to the ones that will be built in the new Northern Meadows Subdivision.**

beginning in December and January. The first homes will be built on the south side of 16th Street.

The ranch-style homes will be approximately 1,200 square feet with 3 bedrooms, 2 bathrooms, two-car garages and an unfinished basement. The houses will be similar with some variation in the roof lines, siding pattern and garage placement.

Final home prices are expected to be between \$285,000-\$315,000, Hegarty said.

“We have about 15 colors we have to choose from,” Hegarty said. “If potential buyers pre-purchase, they will have a chance to select colors and some potential upgrades inside.”

Hegarty said the goal of the project is to bring affordable housing to Holdrege.

The project is made possible through a Rural Workforce Housing grant, which was awarded to PCDC in May of 2023. In partnership with the City of Holdrege, \$400,000 in grant funds and \$200,000 in PCDC matching funds were directed to build Northern Meadows.

To inquire about purchasing a home in the subdivision, contact Joe Johnson with Community Capital Partners at [jjohnson@comcappartners.com](mailto:jjohnson@comcappartners.com).

## Phelps County Pivot Industry .....

continued from page 1

Johnson purchased the business from Monty Vonasek on Jan. 1, 2020. Vonasek still works at the business as does its founder, Terry Gerdes.

Johnson said the Valley brand doesn't publicize its company sales leaders, but they are told the Holdrege business is one of the company's largest volume dealers.

Holdrege Irrigation, which sells Reinke pivots, consistently ranks in the top five sales leaders in the country. In 2023, Holdrege Irrigation was the top Reinke dealer in the nation, an honor the Holdrege business has earned 16 times in the past 33 years.

Lamar Schmidt started Holdrege Irrigation in 1991. It is headquartered in Holdrege, and the company has expanded to Alda, Gothenburg, Lexington and Ravenna.

Tim Schmidt, vice president of Holdrege Irrigation, said the key to the company's success is “good employees and good customers. It's a good community. They support local businesses. Phelps County raises a lot of grain, and they need good equipment to do that.”

Schmidt said the pivot side of Holdrege's Irrigation's business (they also operate Holdrege Electric, Holdrege Well Service and Holdrege Trailer Sales) employs about 70 with about 50 in Holdrege. The company serves a territory in a 70-mile radius of Holdrege.

Schmidt said the pivot business helps Phelps County farmers save water and be more efficient.

Toby Clayton, owner of the local Zimmatic

dealership Husker Irrigation, said Phelps County's farming resources make it a prime location for pivot sales.

“We have some of the best soil in the world right here in Phelps County,” he said. “We also have some of the best water available. We have underground water and surface water. We are lucky to be on the top of the Ogallala aquifer. With that and the combination of good weather, we have some of the best growing conditions.”

Toby has worked in the irrigation business for decades and started Husker Irrigation in 2007. In 2021, he purchased the Zimmatic dealership in Kearney. He typically employs about a dozen people in the Holdrege office.

Clayton said pivot technology is always growing, and advancements are being made in “smart” pivots that will diagnose their own problems and check fields for bugs or fungus. Technology will continue to evolve to help farmers be more efficient.

Wagner's Irrigation started in Holdrege more than 60 years ago and began selling T-L pivots in the early 1990s. Wagner's is owned by Jim Wagner and his sons, Dan and Derek with Derek focusing on the pivot side.

Wagner's has been a top three T-L dealer every year since 1994, most years earning the gold or silver award. Wagner's only location is in Holdrege, but they serve areas beyond Phelps County extending into other states including Oregon, Colorado, Kansas, Wyoming, and Montana. The company has an average of 10-12 employees.



Central Valley's Jeremiah Johnson said there's no doubt that the irrigation business has a major impact on the Phelps County economy, including other businesses that sell fertilizer pumps or fertilizer that is pumped through pivots.

“There's a lot of jobs it affects,” Johnson said. “There's a lot of Phelps County that depends on the irrigation business in general.”

# Community College Vital to Local Economy

## Holdrege Center Considers Moving Back Downtown

Central Community College has had a presence in Holdrege since the 1980s, and the full-time Holdrege Center has been a part of the Phelps County community for nearly 30 years.

The center benefits high school and college students, local employers, entrepreneurs, and lifelong learners. It is a vital part of creating overall economic prosperity in Phelps County through providing affordable educational opportunities.

The Holdrege Center is part of the CCC system, serving six of the 25 counties in the college's service area. The three main campuses are in Grand Island, Columbus, and Hastings.

As many as 90 percent of students educated at CCC remain in the area to work after college helping to create a quality local workforce.



A new nursing assistant class for high school students started at the Holdrege CCC Center in 2023.

### History

Holdrege Regional Director Diana Watson said the Holdrege CCC center opened in the former "Leadfoot" building at 716 4th Ave. in 1995. It moved to the east side of the Phelps County Ag Center in 1998 and expanded and remodeled, doubling its size, in 2013 after the Tri-Basin NRD moved.

Watson said the college has been approached to consider moving to other locations several times, including when the current Black Hills Energy building became available. More recently, the college has been studying a possible move to the former Great Western Bank building to increase its visibility. A decision has not yet been made.

Regardless of its location, the college has a positive impact on the community.

Watson said the Holdrege Center registers at least 800-900 students annually. That number does not include online students, but it does include those who attended large events such as the Nebraska Regenerative Ag Conference, Central Nebraska Mid-Winter Fire School and the ABC's of Child Care conference.

The local center employs two full-time staff, one part-time administrative assistant and several part-time instructors and staff.

### High School Students

The Holdrege Center partners with 12 area high schools to allow students to earn college or dual credit while in high school.

"This saves students time and money," Watson

said. "Those going to college might be able to take lighter semesters or finish sooner."

Some of the high school college credit courses cost as low as \$16 per credit hour. Students who take 12 hours of CCC classes in high school and attend CCC after graduating also earn 12 credit hours of scholarship.

CCC-Holdrege has partnered with PCDC and area businesses to offer nursing assistant classes and automotive technology classes to help fill local high-demand jobs. CCC will soon be offering mechatronic classes to more high students through a grant it received.

### College Students

CCC-Holdrege helps students launch studies in more than 37 career fields offered through the college. Holdrege staff support students through advising, career guidance, registration assistance, navigating distance or online learning and providing a place to study, take classes, and gain support as they start and proceed through their classes at CCC.

Students can earn associates of arts or science degrees from CCC, and some of the more popular programs of study for Holdrege students are business administration, accounting, and entrepreneurship. College classes at CCC are currently just \$112 per credit hour, including fees.

"The Holdrege Center is a benefit to local students because in addition to the financial savings, they also have local support and service, and don't need to

relocate or commute," Watson said.

### Local Employers & Lifelong Learners

CCC offers many opportunities for local employees to learn new skills. Topics may include how to transition from employee to manager, communication, leadership, computer software training and artificial intelligence.

Classes that teach students how to use Photoshop and develop a website often assist local entrepreneurs in advancing their businesses.

CCC also offers personal growth classes through its community education program. A few of the more popular classes recently were a charcuterie board workshop, a gardening class, and a free Welcome to Medicare to class.

### International Studies

Even though it's not unique to Holdrege, CCC's international studies program is coordinated by Holdrege staff.

"Many people don't realize that international studies are also part of the community college experience," Watson said.

This coming year, CCC is planning to take criminal justice students to Ireland to study that country's justice system. A cruise is planned for hospitality and culinary students to gain valuable insights into the cruise industry, and a study abroad experience to Costa Rica is planned for TRIO and first-generation college students.



## HIGH-DEMAND JOBS SCHOLARSHIPS

# Students Awarded \$36,000 in Scholarships

Fourteen college students will receive a share of \$36,000 in scholarships to pursue future careers in Phelps County.

The high-demand jobs scholarships are part of the Phelps County Development Corporation's efforts to create a quality local workforce. The students will return to Phelps County after graduation to work. This year, scholarships ranged from \$1,000-\$5,000 each. The recipients were chosen from a pool of 22 applicants.

In 2023, education was added to the list of high-demand careers in Phelps County. This year, six of the recipients are studying education.

Loomis High School 2024 graduate Chloe Anderson received a \$4,000 high-demand jobs scholarship to study elementary education and coaching at Wayne State College. Chloe is a Class D state champion shot put thrower and will be part of the track team at Wayne State.

"I was so grateful to get the scholarship," Chloe said. "With track practice and traveling to track meets, it won't allow me much time to work. The scholarship will allow me to use my free time to study instead of work. I'm just so grateful that they gave it me because it's made a complete difference in how I will afford college."

Chloe hopes to someday teach 3rd or 4th grade

and coach track and softball.

"I love Phelps County," she said. "If I have the opportunity to return to Phelps County to work, I will take it right way. The people in this community are so kind, and I want to raise my family in a community like this."

Scholarship winners sign a contract stating their intention to return to Phelps County and work after their education. The scholarships are funded through LB840 sales tax funds, private donors and matching funds from the Phelps County Community Foundation.

The scholarships are intended to encourage students to pursue work in local high-demand jobs: nursing, agri-business and technology positions, diesel mechanics, engineer technologists, mechatronics engineers, injection mold technicians, electro-mechanical technologists, machinists, tool and die makers, construction trades, welders and education.

The 2024 recipients are:

- Chloe Anderson, 2024 Loomis High School, Elementary Education with an endorsement in coaching, Wayne State College, \$4,000
- Alexis Billeter, 2021 Loomis High School, Elementary Education, UNK, \$1,000

- Clayton Bohr, 2024 Loomis High School, Animal Nutrition, Fort Hays State University, \$3,000
- Ashlea Booe, 2024 Loomis High School, Fort Hays State, Elementary Education, \$3,000
- Sierra Burrows, Library Science, University of Nebraska Omaha, \$1,000,
- McCartney Elliott, 2022 Holdrege High School, Pre-Pharmacy, UNK, \$1,000
- Amy Hancock, 2006 Axtell High School, K-12 Spec. Education, CCC Kearney, \$3,000
- Jersie Hermanson, 2023 Loomis High School, Pre radiology, UNK, \$3,000
- Anna Pelton, 2021 Bertrand High School, Psychology, Oral Roberts University, \$1,000
- Allyson Schoff, 2024 Bertrand High School, Animal Management & Production, Southeast Community College Beatrice, \$3,000
- Hanna Swearingen, 2023 Holdrege High School, Elementary Education with a minor in special education, Fort Hays State, \$3,000
- Sydnie Voichoskie, 2018 Wilcox-Hildreth, Nursing, UNMC Kearney, \$3,000
- Trey Weaver, 2024 Holdrege High School, Electrician, Northeast Community College, \$5,000
- Maycen Wilson, 2024 Holdrege High School, Elementary Education, UNK, \$2,000

## 2024 SCHOLARSHIP RECIPIENTS



Chloe Anderson



Clayton Bohr



Ashlea Booe



Sierra Burrows



McCartney Elliott



Jersie Hermanson



Amy Hancock



Alexis Billeter



Anna Pelton



Allyson Schoff



Hanna Swearingen



Sydnie Voichoskie



Trey Weaver



Maycen Wilson

## Illinois Native Named Lincoln Federal Supervisor

Rebecca Anderson is the new Customer Service Supervisor at the Holdrege branch of Lincoln Federal Savings Bank of Nebraska, Member FDIC.

She began her new position on April 1.

Anderson, who grew up in the northwest suburbs of Chicago in Carol Stream, Ill., graduated from the University of Nebraska-Lincoln in May 2022 with a Major in Hospitality, Restaurant, and Tourism Management and minors in Leadership and Communication and Technical Theatre with an emphasis in Lighting Design and Stage Management.

Her previous employment includes working as the front desk supervisor at Younes Hospitality in Kearney and at The Scarlet and Marriott Cornhusker hotels in Lincoln.

What she most enjoys about the banking industry so far is “spending time getting to know our customers and creating relationships. Our customers have been so kind and welcoming to my addition to the bank. I have enjoyed getting to know each of our customers and their dogs when they visit us!”

Rebecca volunteers at The Phelps County Pantry, is on the tech team for The Tassel Performing Arts Center, serves on the Holdrege Area Chamber Ambassadors, attends New Life Church Kearney, and will soon be involved with the Holdrege lighting production team.

During her free time, Rebecca enjoys reading a book by the lake, cooking or baking, and spending time with family and friends playing board games.

She and her husband, Josh, were married in August 2023. They have a 10-month-old black lab mix dog named Rooster.



**Rebecca Anderson**



**Ag Services Associates broke ground on June 25 on its new office complex at 14th & Burlington.**

## Ag Service Associates Starts Construction on New Office

Ag Service Associates will have a new headquarters as it broke ground in June on a new 4,200-square-foot office building at 14th and Burlington.

“We have determined it is time to invest in a new office so we can continue to provide exceptional customer service to our clientele,” owner John Williams said. “With the growth of the agency, we also need room to expand and attract additional sales staff and customer service representatives. We are blessed to be in an extremely progressive agricultural area, and we feel it’s time to re-invest our commitment to the community.”

The new building will house six sales agent offices, three customer service representative workstations, a large conference room, a small collaboration room, a reception area, a breakroom, and a secure file room.

BD Construction of Kearney is the general contractor with local subcontractors and suppliers hired as available. Construction is expected to be completed in the first quarter of 2025.

Construction of a second commercial building on the northwest corner of the property is also expected to begin this summer. This building is being constructed as a “build to suit” property. Ag Service Associates is seeking businesses interested in leasing 2,000-4,000 square feet of commercial space on this prime Holdrege intersection.

A third and final phase for the property will consist of an additional 1,500-1,800 building to be located in the southwest corner of the property. Construction will begin shortly after the completion of the first two buildings. The purpose of the third commercial building is currently in exploratory phases.

Ag Service Associates provides insurance services for agricultural producers, landlords,

and insurance agencies across a seven-state area including Nebraska, Colorado, Kansas, New Mexico, South Dakota, Texas and Wyoming.

John and Michelle Williams purchased the business in 2007. Since then, the growth of the business has exceeded expectations.

“Throughout the past 17 years, the success of the agency can be attributed to a relentless focus on customer service and dedication from employees and agents,” Williams said. “Additional aspects contributing to the success of the business include an extensive knowledge of crop production practices, agronomy, adaptation of technology, and risk management products.”

The business employs six staff, including the Williams’ son, Brennan, who graduated from the University of Nebraska-Lincoln in 2022 with a degree in agronomy and agricultural economics. Brennan shares management responsibilities for the agency while placing a special emphasis on technology with the use of drones for field evaluations and precision agriculture. Brennan’s wife, Kelsey, also recently joined the agency as a customer service representative and marketing manager.

Ag Service Associates anticipates hiring additional staff once the building is complete, including customer service representatives and licensed sales agents.

Planning for this project has been extensive and has involved years of research and preparation.

“We are excited to continue investing in Holdrege and the surrounding communities,” he said. “We also look forward to expanding our footprint beyond our current boundaries. Having a resource such as PCDC with local, state and national relationships can play a vital role in the success of our business/ agency and for Phelps County.”

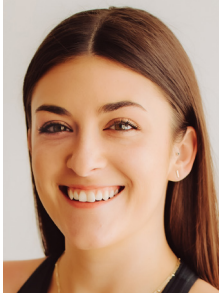


# MomenTum Dance Moving Downtown

MomenTum Dance Academy will soon have a new more visible home in downtown Holdrege.

Owner Mady Thelen said she purchased the building at 702 4th Ave. "so we could grow and offer more for our dancers." She hopes to open the new studio by the time classes start in August.

"I hope that the exposure of being on a main street in town will bring awareness to the studio and gain even more students," Thelen said. "There's plenty of things to do for the parents during their student's class. With a nail salon, boutique, and coffee shop within walking distance, it is the perfect opportunity for everyone to thrive."



**Mady Thelen**

Thelen, who was a professional dancer in Kansas City before moving to Holdrege, started the studio in the fall of 2021 at its current location at 118 W. 11th Ave.

"My plan always was to rent for the first couple years and buy my own space once I knew that I could successfully run the studio," she said. "We are currently at 130 students and the class sizes are full."

The new location will be remodeled to house two classrooms, which will allow Thelen to double the amount of classes offered and to offer two classes at the same time.

"We can hold fitness classes for the parents during their dancers' class," Thelen said "It's a great use of time rather than sitting in the lobby scrolling social media."

She offers dance classes for children ages 2-18, including ballet, tap, jazz, hip hop, clogging and lyrical. She also offers adult fitness classes including barre, HIIT, and strength and stretch classes. She teaches a competition team that travels to Omaha and Kansas City in the spring. In addition to a spring dance recital, Thelen's students also perform The Nutcracker each December at The Tassel in Holdrege.

Her students travel from as far away as Elwood, Alma, Minden, and towns in between.

Thelen said she currently employs three part-time dance teachers and will add two more with the new studio. The employees teach dance and fitness classes, do choreography and assist with recitals and competitions.

The studio's new entrance will be on the west side of the building and will open into a modern waiting room. After renovated, the new studio will have two bathrooms and a dressing room for young students to change into their dance attire. There will be two classrooms with barres built into the walls, 100 feet of mirrors, and high ceilings. A large storage closet will be included in one of the studios to store mats, fitness equipment and props. Thelen's office will be in the basement, along with more storage for miscellaneous recital



**Lily Janssen performs at the MomenTum Dance spring recital. (Courtesy photo)**

décor and costumes.

PCDC is assisting this project with multiple grant opportunities.

"I am amazed with how much they can offer small businesses," Thelen said. "Ron and Sally are such a delight to work with!"

## Lone Wolf BBQ Opens Storefront Location in Downtown Bertrand

After a few years of winning BBQ competitions and operating a food truck, Lone Wolf BBQ now has a storefront in downtown Bertrand.

Ricky and Virginia Gennrich entered their first BBQ competition in 2017 at Oxford Turkey Days.

"We had no idea what to do with a brisket, but we were fortunate enough to win beans," Virginia said. "Despite not knowing what to do, we were hooked."

They competed in the Oxford Turkey Days competition every year since 2017 and won in 2021. They competed in the Bertrand Brews & BBQ competition every year since it started in 2019 and won that competition in 2022. They also competed in Overton's competition, coming in second in 2022.

In 2021, the Gennriches turned their hobby into a business when they purchased a camper and

converted it into a food truck. They have enjoyed catering and selling from their food truck across south-central Nebraska.

"We had talked for a couple of years that when we retired, we would like to expand our cooking and do more of it," Virginia said. "We are very blessed that we both have a passion for cooking and work well together."

They both retired in 2023 and started seeking a storefront in Bertrand. They settled on the former Gary's Barber Shop at 618 Minor and opened a restaurant in March. They are open for lunches Mondays through Fridays from 11 a.m.-2 p.m. They serve a variety of meals including hot beef sandwiches, meatballs, brisket nachos, pulled pork sandwiches, and fried chicken.

Brisket has become one of their customers' favorites. Customers also request a lot of pulled



**Ricky & Virginia Gennrich opened Lone Wolf BBQ in downtown Bertrand.**

pork, and the Gennriches make homemade salads and desserts to complement their meats.

"We are blessed with family and many wonderful friends who are all very supportive," Virginia said.



PO Box 522  
Holdrege, NE 68949-0522

Or Current Resident

Your **SOURCE** for  
local business  
opportunities  
and economic  
development news  
in Phelps County!

PHELPS COUNTY BUSINESS JOURNAL

# **GO** NEWS

## TAKE A LOOK **INSIDE**

- 1** PIVOT INDUSTRY
- 2** HOLDREGE MAYOR
- 3** HOUSING
- 4** CCC HOLDREGE
- 5** SCHOLARSHIPS
- 6** BUSINESS NEWS
- 7** BUSINESS NEWS

### **DAIRY QUEEN GROUNDBREAKING**

PCDC hosted a June 7 groundbreaking for Dairy Queen, which is relocating to Burlington Street. Construction is expected to be complete in October.

